



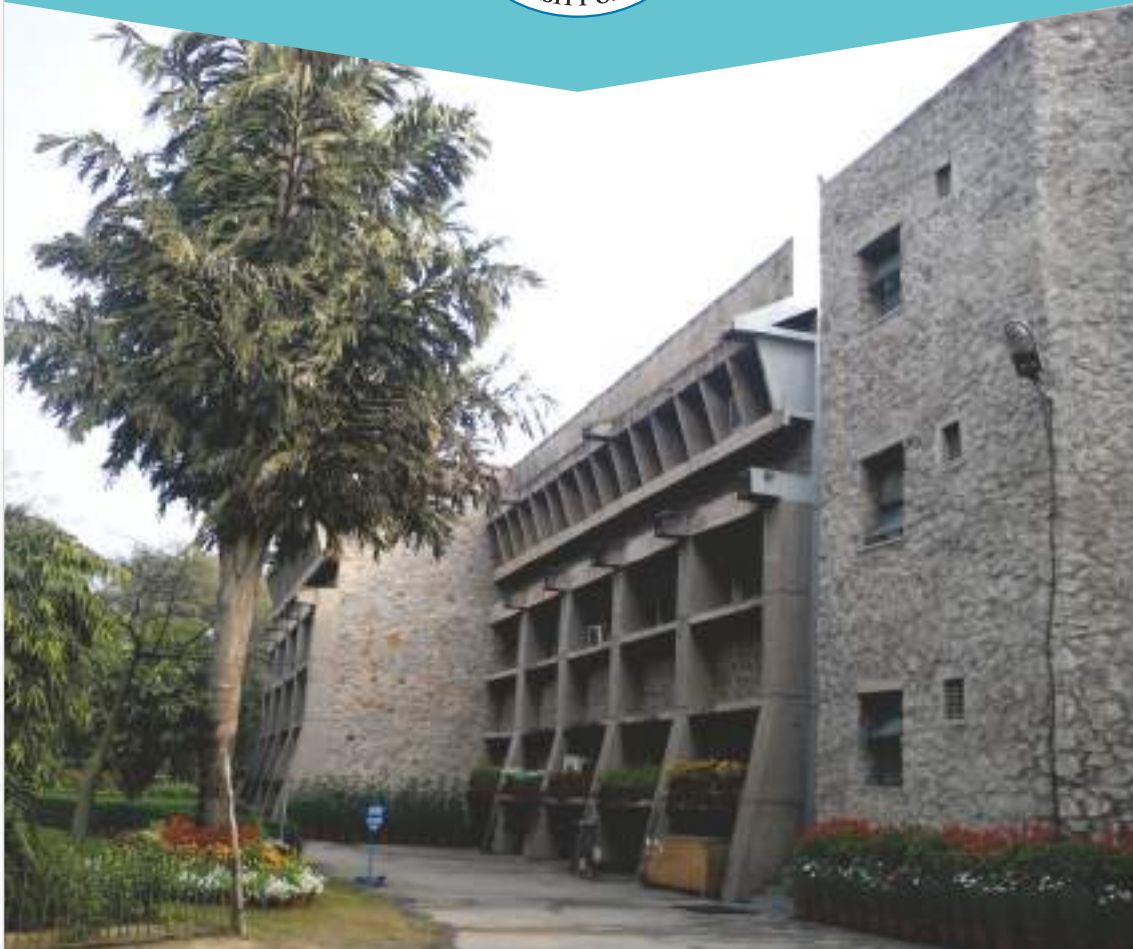
2021-2022

Corporate Brochure

MBA (BE)



DEPARTMENT OF BUSINESS ECONOMICS, UNIVERSITY OF DELHI



About The Department

In 1973, the Department of Business Economics, under the umbrella of the prestigious University of Delhi, introduced the Masters Program in Business Economics baptized as MBE. It offered a unique blend of theoretical excellence paired with the practical realities of the Business World. "Change is the only constant" is an adage that the Department sincerely believes in. To that end, it kept adapting itself along the course of time, culminating with the introduction of MBA in Business Economics which replaced the earlier MBE program in 2015.

An eclectic and erudite group of faculty, researchers, and professionals, with their vast pool of managerial expertise, gives the Department a distinctive edge and an exalted stature. Today the Department takes immense pride in the students who pass through its hallowed halls and the lasting impact that they have on the industry through their qualitative and quantitative expertise of their domain.

In its illustrious history of 48 years, The Department of Business Economics has established itself as an epitome of excellence. Over the years, the department has fostered strong alliances with corporate houses and retained its position as their preferred recruitment destination.

Message From Placement Advisor



Dr. Yamini Gupta

Faculty Placement Advisor

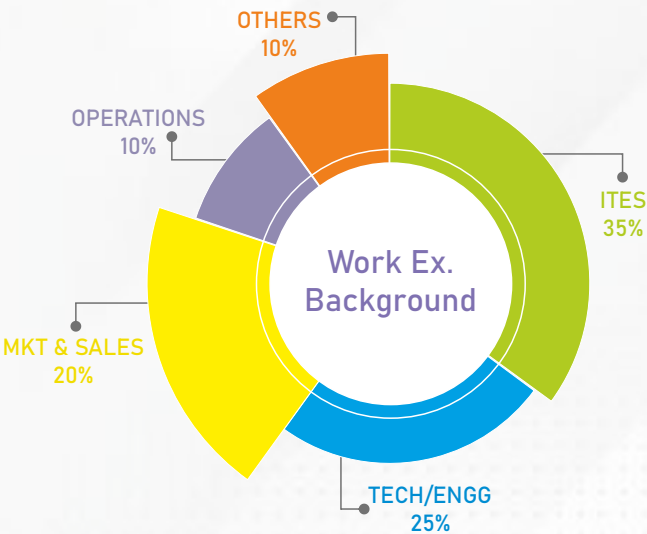
It is my privilege to write this message to invite and welcome recruiters to participate in the placement process for MBA (Business Economics) students from our campus. Under the ambit of the University of Delhi, the Department of Business Economics (now known as Department of Finance and Business Economics) pioneered India's first master's degree program in Business Economics in 1973. With forty-eight glorious years of strategic experience in producing industry leaders, the Department can boast of creating an eminent cadre that just stands out from the rest. Over the years, this program has established itself in the field of quantitative research and data analytics and is a highly sought-after degree.

The new normal of uncertainty that we are facing during the ongoing pandemic has highlighted the importance of flexibility, adaptation and communication in our work and dealings with superiors, peers and subordinates. Working, teaching and learning online have thrown up numerous challenges. I take great pride in mentioning that as a batch and in their individual capacities, the current Business Economics students have displayed tremendous courage

and adaptability in the way they have participated in the teaching-learning process and conducted various department and university level activities. Their efforts have been gratefully acknowledged by the Vice Chancellor of our university.

It is my sincere hope that your interaction with our placement team will lead to a mutually beneficial and long term relationship between our department and your esteemed organization.

Batch Profile- 2019-21



BATCH SIZE
62



COM.+ECO+STATS
GRADS 24%



NIT/BITS/DU
35%



ENGINEERS
69%

With **48 years**
of Industrial superiority,
spreading knowledge
and bliss
- Vidya Anattam

Carefully chosen top
minds of the
country with **95.6%**
CAT Cut-off

Starting this September Onwards:

Outlook

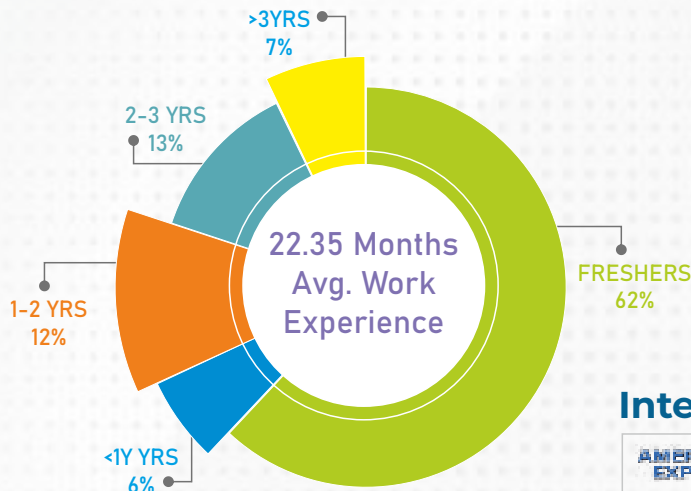
Top 30
MBA Colleges

TIME

Top 40
MBA Colleges

GETMYUNI

Top 10%
College for
Placement



Dual
Specialization

48 Glorious
year of
History

Synergy
between
Business
and Data

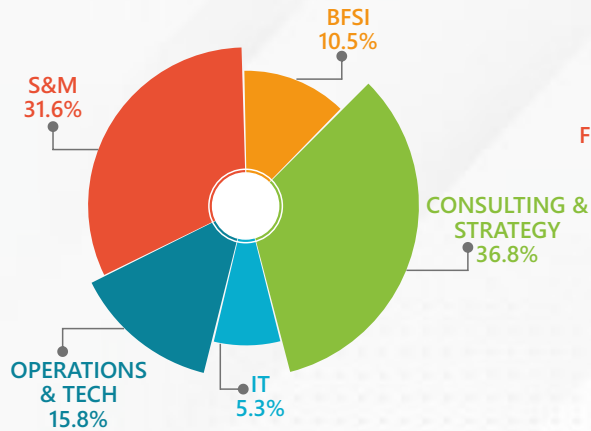
10+ Student
Societies

Internships At

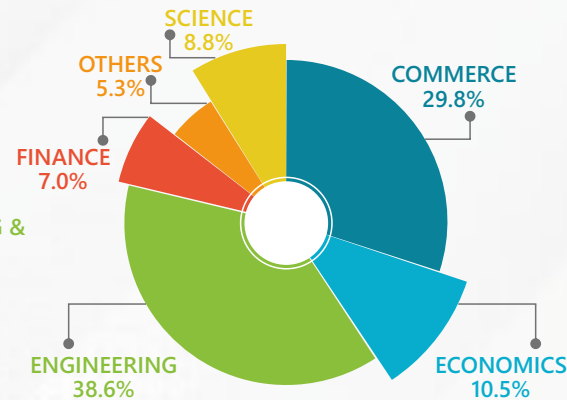
AMERICAN EXPRESS	BARCLAYS	ArcoSum	TRIDENT GROUP	Bank of America	dunhumby	HCL	ICICI Bank	OYO	VOLTAS - beko	KPMG
Piramal	pwc	ANZ	citi	DECATHLON	EXL	nielsen	RBL BANK	AXTEL	EY	Gartner

Batch Profile- 2020-22

Domain Percentage



Stream Percentage

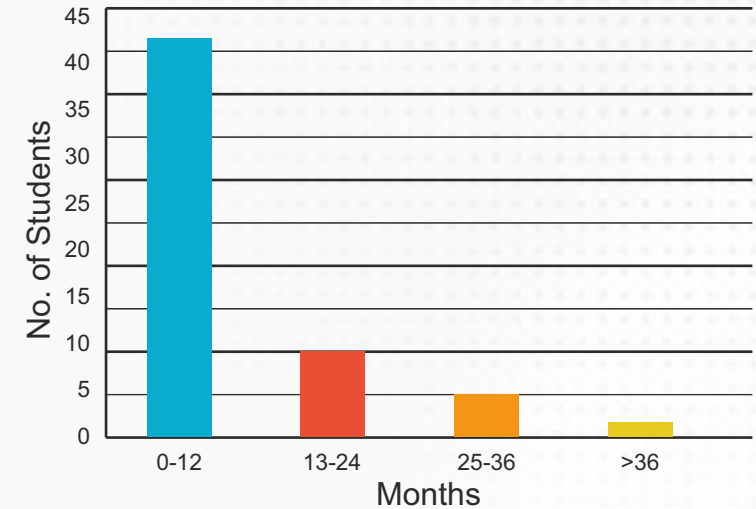


48 Years of
Industry
Excellence

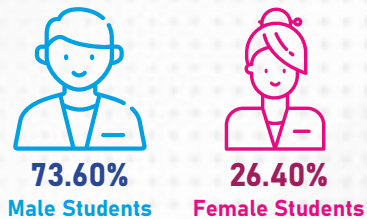
Outlook India
Top 30
BSchool

Times Magazine
Top 40
MBA Colleges

Average Work Experience of 20.4 Months



Gender Ratio



66% Students from
Tier 1 Colleges:
NIT, DTU, SRCC, SSCBS etc.

96.83
Average Cat
Percentile

Placement Stats

Highest Package | Average Package
21.5 LPA | **11.97 LPA**

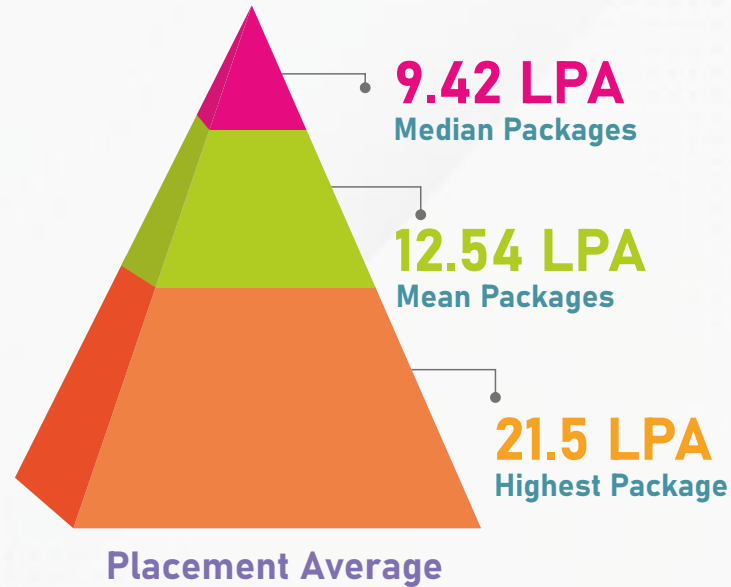
Students From



Regular Recruiters



Final Placement and Summer Internships



Legacy Recruiters



New Recruiters





Shivani Bindal

: 9650236791

President

shivanibindal2022@dbe-du.org

Training and Placement Cell

Ranjika Debnath

: 9433317767

Placement Convenor

ranjikadebnath2022@dbe-du.org

Akshita Katyal

: 7838602187

Senior Placement Coordinator

akshitakatyal2022@dbe-du.org

Akshat Jain

: 8076156907

Senior Placement Coordinator

akshatjain2022@dbe-du.org

Mohit Chauhan

: 8427415799

Senior Placement Coordinator

mohitchauhan2022@dbe-du.org

Associate with us: placement@dbe-du.org

**DEPARTMENT OF BUSINESS ECONOMICS,
UNIVERSITY OF DELHI**

Arts Faculty Building, South Campus, University of Delhi,
Benito Juarez Marg, Dhaula Kuan, New Delhi - 110021

